



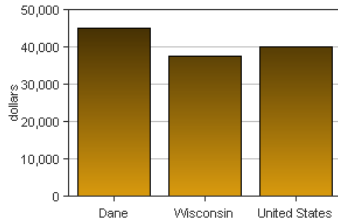
Dane, Wisconsin

Dane is one of 72 counties in Wisconsin. It is part of the [Madison, WI \(Metropolitan Statistical Area\)](#). Its 2008 population of 483,298 ranked 2nd in the state.

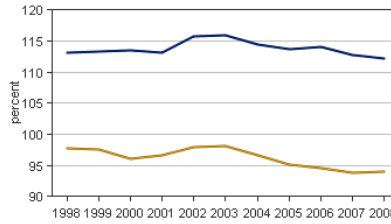
PER CAPITA PERSONAL INCOME

In 2008 Dane had a per capita personal income (PCPI) of \$45,080. This PCPI ranked 3rd in the state and was 119 percent of the state average, \$37,770, and 112 percent of the national average, \$40,166. The 2008 PCPI reflected an increase of 1.5 percent from 2007. The 2007-2008 state change was 2.1 percent and the national change was 2.0 percent. In 1998 the PCPI of Dane was \$30,824 and ranked 4th in the state. The 1998-2008 average annual growth rate of PCPI was 3.9 percent. The average annual growth rate for the state was 3.6 percent and for the nation was 4.0 percent.

Per Capita Personal Income, 2008



Per Capita Income as a Percent of the United States, 2008



■ Wisconsin ■ Dane

TOTAL PERSONAL INCOME

	2007-08 percent change	1998-2008 AAGR
Dane	3.0 %	5.3 %
Wisconsin	2.6 %	4.2 %
U.S.	2.9 %	5.0 %

AAGR: average annual growth rate

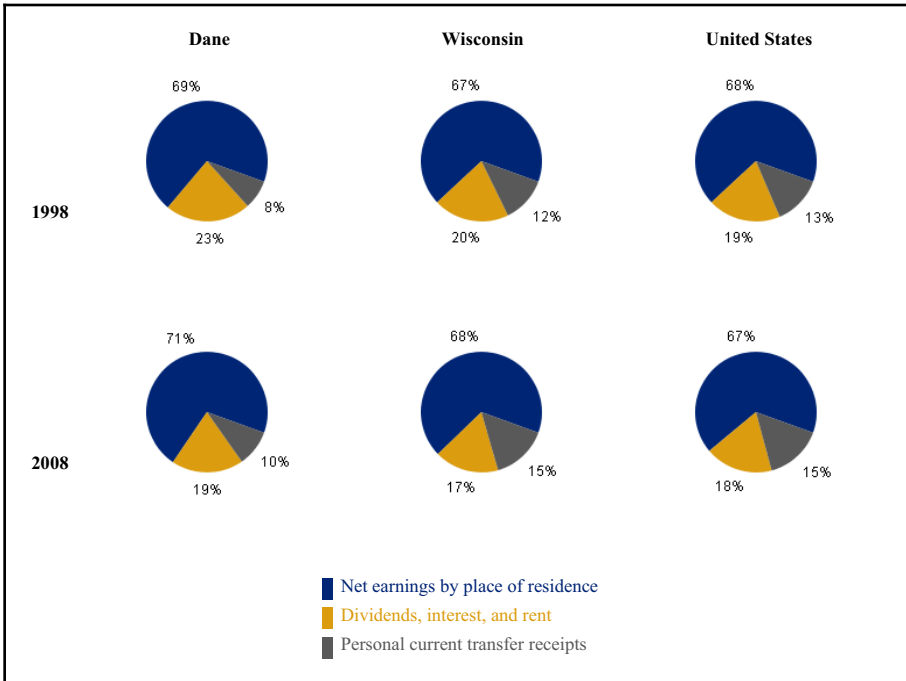
In 2008 Dane had a total personal income (TPI) of \$21,786,903*. This TPI ranked 2nd in the state and accounted for 10.3 percent of the state total. In 1998 the TPI of Dane was \$12,952,599* and ranked 3rd in the state.

*Note: Total personal income estimates are in thousands of dollars, not adjusted for inflation.

COMPONENTS OF TOTAL PERSONAL INCOME

Total personal income includes net earnings by place of residence; dividends, interest, and rent; and personal current transfer receipts received by the residents of Dane.

Percent Contribution to Total Personal Income



	Dane	Wisconsin	U.S.
Net earnings	3.1 %	2.0 %	2.0 %
Dividends, interest, and rent	0.8 %	1.5 %	1.3 %
Personal current transfer receipts	6.9 %	6.5 %	9.2 %

	Dane	Wisconsin	U.S.
Net earnings	5.6 %	4.2 %	4.8 %
Dividends, interest, and rent	3.6 %	2.5 %	4.2 %
Personal current transfer receipts	7.3 %	6.4 %	6.7 %